



Sieyuan

Sieyuan

**Shanghai Sieyuan Low
Voltage Switchgear Co., Ltd.**

**New Generation Solutions for Low
Voltage DC Systems**

Sieyuan

As the eastern horizon lights up with a touch of orange, the world welcomes new hope and vitality.

The bright sunshine, fresh air, vast ocean and broad land all harbor endless energy and wisdom.

With the rise of new power systems, the variable application scenarios put forward higher requirements for switching devices. To make energy transmission and distribution safer, more controllable and more efficient, Sieyuan Low Voltage actively researches and innovates to provide new generation solutions for new energy customers in terms of source, grid, load, storage and charging systems.



Smarter Power Better Life

New Generation Solutions for Low Voltage DC Systems

**Energy Storage
Solutions** — **P01**

PV Solutions — **P15**

**SVG/High Voltage
Inverter Solutions** — **P24**

Sieyuan

Compact Size, Low Power Consumption, High Reliability, High Integration



Compact Size: saving installation space with flexible layout



Low Power Consumption: less heat generation and low system power consumption



High Reliability: high reliability and easy maintenance



High Integration: multi-functional integration, intelligent and efficient



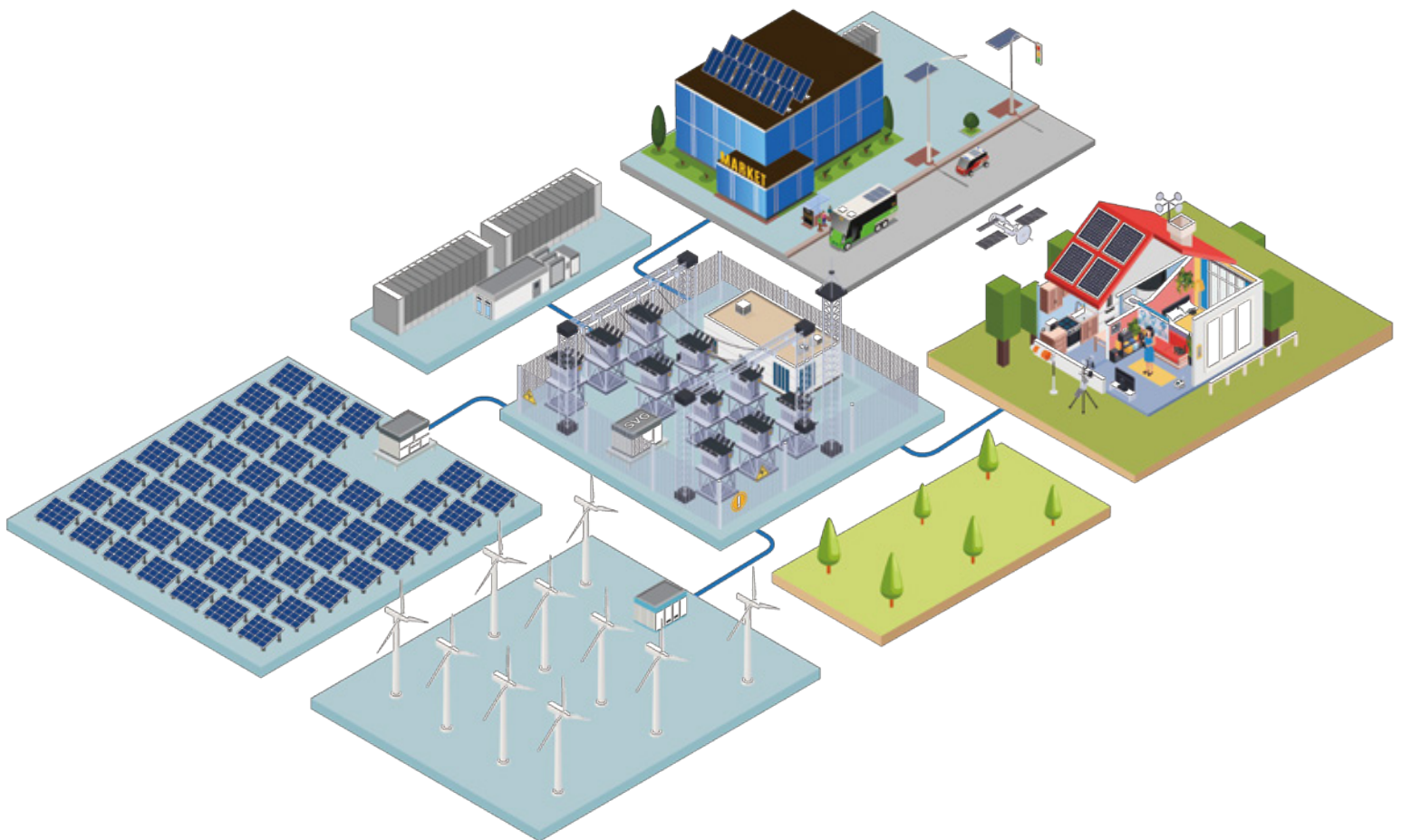
Energy Storage Solutions

Large-scale Energy Storage Power Station

- DC Frame Type Switch-disconnectors
- DC Switch-disconnectors and Fuse-combination Units
- DC Molded Case Circuit Breaker
- DC Molded Case Switch-disconnectors
- DC Rotary Switch-disconnectors
- Energy Storage Combiner Cabinet

Industrial and Commercial/Household Energy Storage

- DC Molded Case Circuit Breaker
- DC Molded Case Switch-disconnectors
- DC Miniature Circuit Breaker
- DC Rotary Switch-disconnectors





DC Frame Type Switch-disconnectors SYW6GZ-1600

This SYW6GZ Series DC Frame Type Switch-disconnectors is suitable for DC systems with a rated operating voltage of DC1500V and below and a rated operating current of 1600A and below, with functions including main circuit connection, breaking, and isolation. Typical application scenarios include energy storage, photovoltaics, and DC distribution.

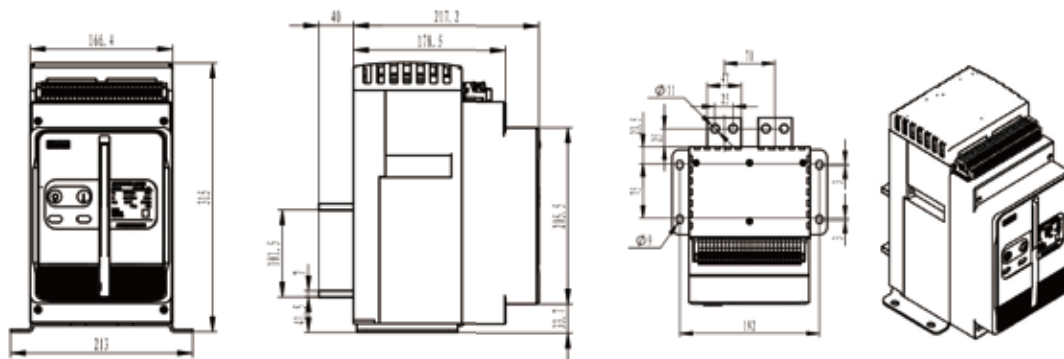
Compliance with Standards

GB/T14048.3, IEC 60947-3、UL489B

Performance Parameters

S/N	Item	Unit	Parameter Value
1	Rated operating voltage Ue	V	1500
2	Rated insulation voltage Ui	V	1500
3	Rated impulse withstand voltage Uimp	kV	12
4	Rated operating current Ie	A	1600
5	Rated short-time withstand current Icw	kA/1s	50
		kA/0.1s	120
6	Utilization category	DC-PV2、UL489B	
7	Operating ambient temperature	℃	-40~+70
8	Altitude conditions	m	5000
9	Mechanical durability	Cycles	15000
10	Electrical durability	Cycles	1000
11	Ingress protection rating	IP20	
12	Pollution degree rating	Degree 3	

Dimensions





DC Frame Type Switch-disconnectors SYW6GZ-2500

This SYW6GZ Series DC Frame Type Switch-disconnectors is suitable for DC systems with a rated operating voltage of DC1500V and below and a rated operating current of 2500A and below, providing functions of main circuit connection, breaking, and isolation. Typical application scenarios include energy storage, photovoltaics, and DC distribution.

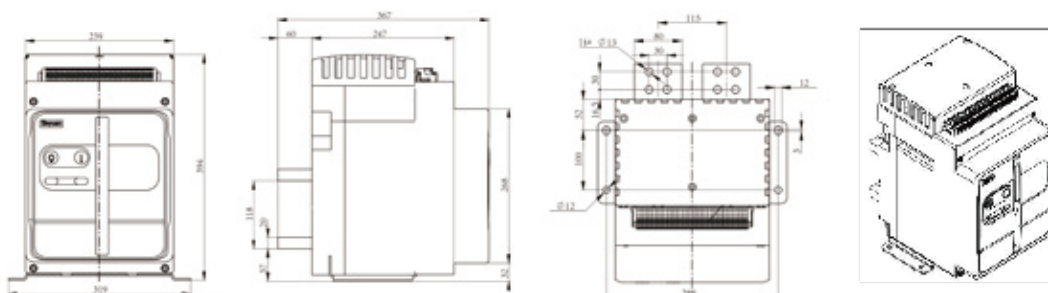
Compliance with Standards

GB/T14048.3, IEC 60947-3

Performance Parameters

S/N	Item	Unit	Parameter Value
1	Rated operating voltage U_e	V	1500
2	Rated insulation voltage U_i	V	1500
3	Rated impulse withstand voltage U_{imp}	kV	12
4	Rated operating current I_e	A	2500
5	Rated short-time withstand current I_{cw}	kA/1s	100
		kA/0.2s	150
6	Utilization category		DC-PV2
7	Operating ambient temperature	°C	-40~+70
8	Altitude conditions	m	5000
9	Mechanical durability	Cycles	15000
10	Electrical durability	Cycles	1000
11	Ingress protection rating		IP20
12	Pollution degree rating		Degree 3

Dimensions





DC Frame Type Switch-disconnectors SYW6GZ-4000

This SYW6GZ Series DC Frame Type Switch-disconnectors is suitable for DC systems with a rated operating voltage of DC1500V and below, and a rated operating current of 4000A and below, providing functions of main circuit connection, breaking, and isolation. Typical application scenarios include energy storage, photovoltaics, and DC distribution.

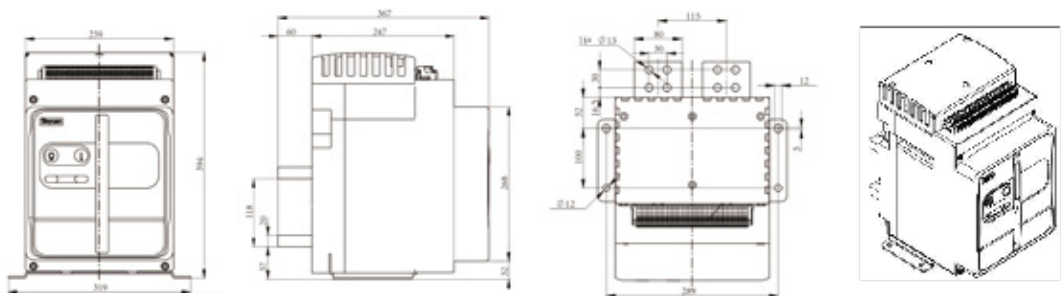
Compliance with Standards

GB/T14048.3, IEC 60947-3、UL489B

Performance Parameters

S/N	Item	Unit	Parameter Value
1	Rated operating voltage Ue	V	1500
2	Rated insulation voltage Ui	V	1500
3	Rated impulse withstand voltage Uimp	kV	12
4	Rated operating current Ie	A	4000
5	Rated short-time withstand current Icw	kA/1s	100
		kA/0.2s	150
6	Utilization category		DC-21B、UL489B
7	Operating ambient temperature	°C	-40~+70
8	Altitude conditions	m	5000
9	Mechanical durability	Cycles	15000
10	Electrical durability	Cycles	1000
11	Ingress protection rating		IP20
12	Pollution degree rating		Degree 3

Dimensions





DC Switch-disconnectors and Fuse-combination Units SYH6Z-1600

SYH6Z DC Switch-disconnectors and Fuse-combination Units are suitable for DC systems with a rated operating voltage of DC1500V or below and a rated operating current of 1600A or below, providing functions of main circuit connection, breaking, isolation, and protection. Typical application scenarios include energy storage, photovoltaics, and DC distribution.

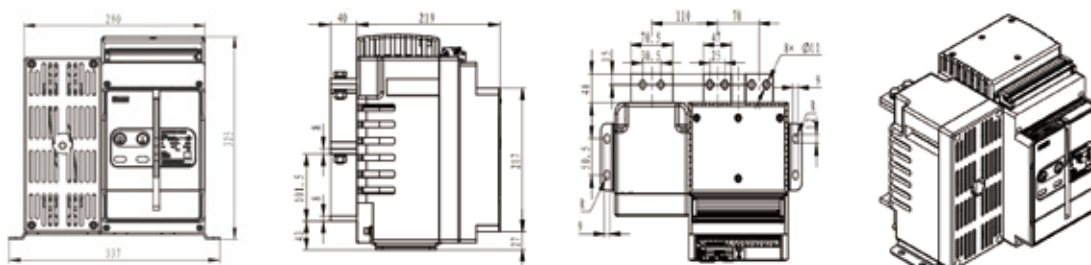
Compliance with Standards

GB/T14048.3、IEC 60947-3

Performance Parameters

S/N	Item	Unit	Parameter Value
1	Number of poles	P	2
2	Rated current Ie	A	1600
3	Rated operating voltage Ue	V	DC1500
4	Rated insulation voltage Ui	V	DC1500
5	Rated impulse withstand voltage Uimp	kV	12
6	Rated limiting short-circuit current Iq	kA	120
7	Fuse model	RSZ307-5-DAV-1800A1500V (Zhongrong) , ESS5-1800 (Bussmann) , H4FG2000(Hollyland), SYSG- 1800(Sieyuan Low Voltage), etc.	
8	Frame Type Switch-disconnectors	YW6GZ-1600 (Sieyuan Low Voltage)	

Dimensions





DC Switch-disconnectors and Fuse-combination Units
SYH6Z-2500

SYH6Z DC Switch-disconnectors and Fuse-combination Units are suitable for DC systems with a rated operating voltage of DC1500V or below and a rated operating current of 2000A or below, providing functions of main circuit connection, breaking, isolation, and protection. Typical application scenarios include energy storage, photovoltaics, and DC distribution.

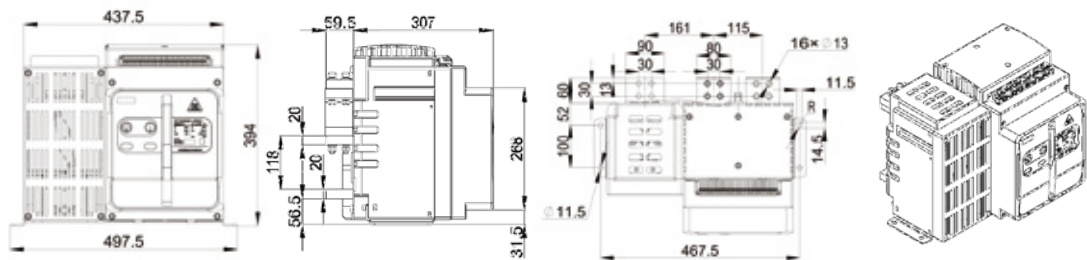
Compliance with Standards

GB/T14048.3、IEC 60947-3

Performance Parameters

S/N	Item	Unit	Parameter Value
1	Number of poles	P	2
2	Rated current Ie	A	2000
3	Rated operating voltage Ue	V	DC1500
4	Rated insulation voltage Ui	V	DC1500
5	Rated impulse withstand voltage Uimp	kV	12
6	Rated limiting short-circuit current Iq	kA	150
7	Fuse model	RSZ307-N-UJP-3000A (Zhongrong) , CBMG-3000A (Bussmann) , SYFSG- 3000A(Sieyuan Low Voltage), etc.	
8	Frame Type Switch-disconnectors	SYW6GZ-2500 (Sieyuan Low Voltage)	

Dimensions





DC Switch-disconnectors and Fuse-combination Units SYH6Z-4000

SYH6Z DC Switch-disconnectors and Fuse-combination Units are suitable for DC systems with a rated operating voltage of DC1500V or below and a rated operating current of 3200A or below, providing functions of main circuit connection, breaking, isolation, and protection. Typical application scenarios include energy storage, photovoltaics, and DC distribution.

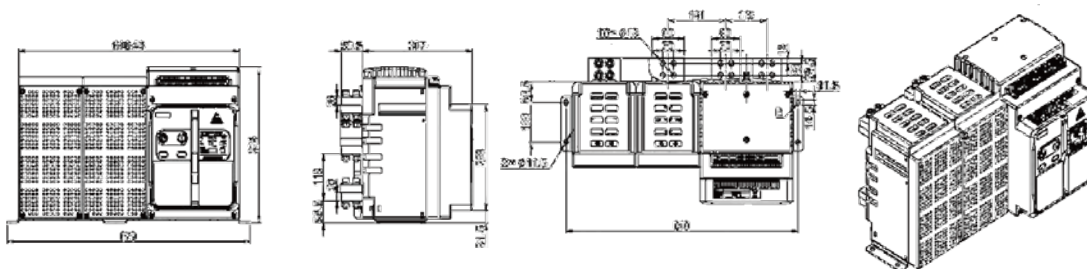
Compliance with Standards

GB/T14048.3、IEC 60947-3

Performance Parameters

S/N	Item	Unit	Parameter Value
1	Number of poles	P	2
2	Rated current I_e	A	3200
3	Rated operating voltage U_e	V	DC1500
4	Rated insulation voltage U_i	V	DC1500
5	Rated impulse withstand voltage U_{imp}	kV	12
6	Rated limiting short-circuit current I_q	kA	150
7	Fuse model		RSZ307-N-UJP-3000A (Zhongrong), CBMG-3000A (Bussmann), SYFSG-3000A (Sieyuan Low Voltage), etc.
8	Frame Type Switch-disconnectors		SYW6GZ-4000 (Sieyuan Low Voltage)

Dimensions





DC Molded Case Circuit Breaker SYM6Z-250

This SYM6Z Series Molded Case DC Circuit Breaker is suitable for DC systems with a rated operating voltage of DC1500V or below and a rated operating current of 250A or below, providing functions of overload and short-circuit protection. Typical application scenarios include electrochemical energy storage, large-scale photovoltaics, DC data centers, and DC distribution.

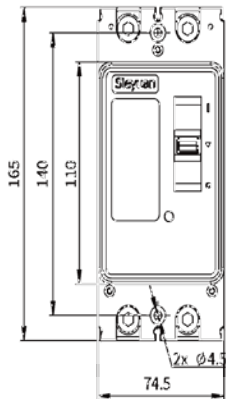
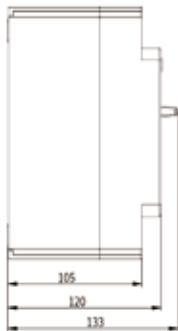
Compliance with Standards

GB/T14048.2, IEC 60947-2

Performance Parameters

S/N	Item	Unit	Parameter Value
1	Rated operating voltage Ue	V	1500
2	Rated insulation voltage Ui	V	1600
3	Rated impulse withstand voltage Uimp	kV	12
4	Rated operating current Ie	A	250
5	Rated ultimate short-circuit breaking current Icu	kA	6
6	Rated operating short-circuit breaking current Ics	kA	6
7	Utilization category		A
8	Operating ambient temperature	°C	-40~+70
9	Altitude conditions	m	≤5000
10	Mechanical durability	Cycles	10000
11	Electrical durability	Cycles	1000
12	Ingress protection rating		IP20

Dimensions





DC Molded Case Switch-disconnectors SYM6GZ-250

This SYM6GZ series DC molded case switch is suitable for DC systems with a rated operating voltage of DC1500V and below and a rated operating current of 250A and below, providing functions of main circuit connection, breaking, and isolation. Typical application scenarios include electrochemical energy storage, large-scale photovoltaics, DC data centers, and DC distribution.

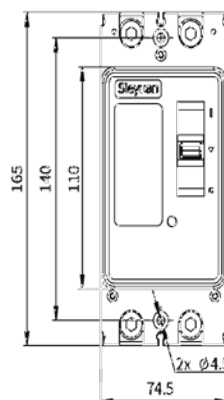
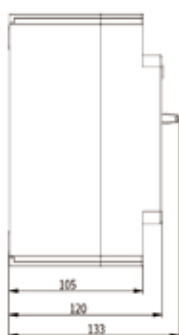
Compliance with Standards

GB/T14048.3, IEC 60947-3

Performance Parameters

S/N	Item	Unit	Parameter Value
1	Rated operating voltage U_e	V	1500
2	Rated insulation voltage U_i	V	1600
3	Rated impulse withstand voltage U_{imp}	kV	12
4	Rated operating current I_e	A	250
5	Rated limiting short-circuit current I_q	kA	30
6	Utilization category		DC-PV2
7	Operating ambient temperature	°C	-40~+70
8	Altitude conditions	m	≤5000
9	Mechanical durability	Cycles	10000
10	Electrical durability	Cycles	1000
11	Ingress protection rating		IP20

Dimensions





DC Rotary Switch-disconnectors
SYG6Z-400

This SYG6Z-400 Series DC Rotary Switch-disconnectors is suitable for DC systems with a rated operating voltage of DC1500V or below and a rated operating current of 400A or below, providing functions of overload and short-circuit protection. Typical application scenarios include electrochemical energy storage, large-scale photovoltaics, DC data centers, and DC distribution.

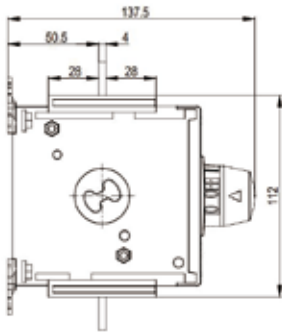
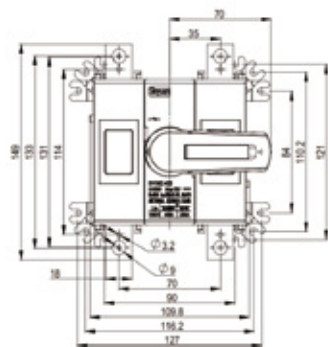
Compliance with Standards

GB/T14048.3, IEC 60947-3

Performance Parameters

S/N	Item	Unit	Parameter Value
1	Rated operating voltage Ue	V	1500
2	Rated insulation voltage Ui	V	1500
3	Rated impulse withstand voltage Uimp	kV	12
4	Rated operating current Ie	A	400
5	Rated short-time withstand current Icw	kA/1s	8
		kA/0.15s	20
6	Rated limiting short-circuit current Iq	kA	30
7	Rated short-circuit making capacity Icm	kA	10
8	Utilization category		DC-PV2
9	Operating ambient temperature	°C	-30~+75
10	Altitude conditions	m	5000
11	Mechanical durability	Cycles	8000
12	Electrical durability	Cycles	400
13	Ingress protection rating		IP20

Dimensions





DC Rotary Switch-disconnectors SYG6Z-63

This SYG6Z Series DC Rotary Switch-disconnectors is suitable for DC systems with a rated operating voltage of DC1500V and below and a rated operating current of 63A and below, providing functions of main circuit connection, breaking, and isolation. Typical application scenarios include energy storage and photovoltaics.

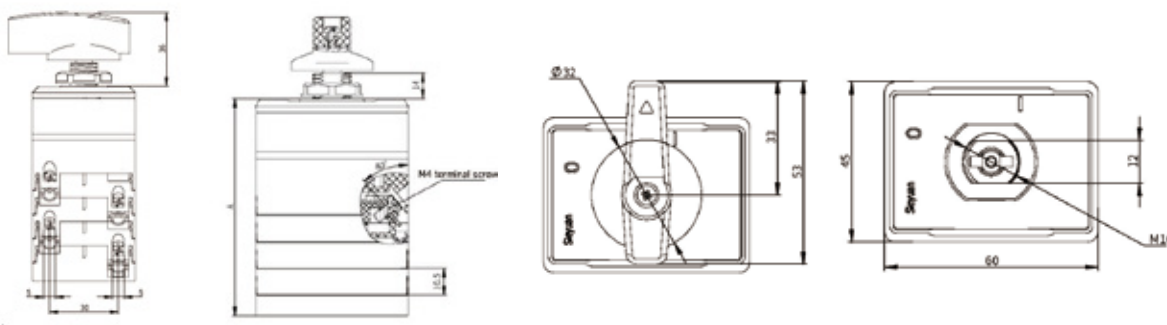
Compliance with Standards

GB/T14048.3, IEC 60947-3、AS60947.3

Performance Parameters

S/N	Item	Unit	Parameter Value
1	Rated operating voltage U_e	V	1500
2	Rated insulation voltage U_i	V	1500
3	Rated impulse withstand voltage U_{imp}	kV	8
4	Rated operating current I_e	A	20, 25, 40
5	Conventional free-air thermal current I_{th}	A	63
6	Utilization category		DC-PV2
7	Operating ambient temperature	°C	-40~+85
8	Altitude conditions	m	5000
9	Mechanical durability	Cycles	15000
10	Electrical durability	Cycles	300
11	Ingress protection rating of port		IP20
	Ingress protection rating of panel mounting hole position		IP66
12	Pollution degree rating		Degree 3
13	Number of plies		2、3、4、6、8

Dimensions





DC Rotary Switch-disconnectors SYG6ZM-63

This SYG6ZM Series DC Rotary Switch-disconnectors is suitable for DC systems with a rated operating voltage of DC1500V and below and a rated operating current of 63A and below, providing functions of main circuit connection, breaking (automatic), and isolation. Typical application scenarios include energy storage and photovoltaics.

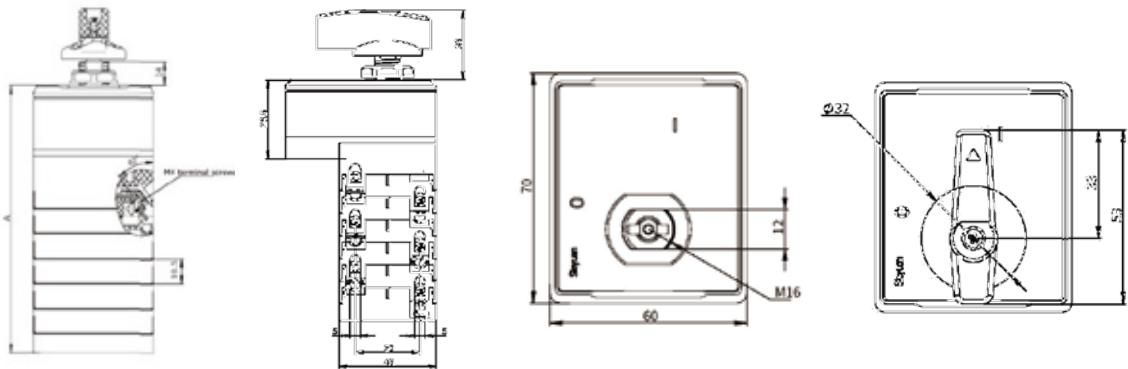
Compliance with Standards

GB/T14048.3, IEC 60947-3、AS60947.3

Performance Parameters

S/N	Item	Unit	Parameter Value
1	Rated operating voltage Ue	V	1500
2	Rated insulation voltage Ui	V	1500
3	Rated impulse withstand voltage Uimp	kV	8
4	Rated operating current Ie	A	20, 25, 40
5	Conventional free-air thermal current Ith	A	63
6	Utilization category		DC-PV2
7	Operating ambient temperature	°C	-40~+85
8	Altitude conditions	m	5000
9	Mechanical durability	Cycles	10000
10	Electrical durability	Cycles	300
11	Ingress protection rating of port		IP20
	Ingress protection rating of panel mounting hole position		IP66
12	Pollution degree rating		Degree 3
13	Number of plies		4、6、8、10、12

Dimensions





DC Miniature Circuit Breaker SYB6Z-63

This SYB6Z series DC specialized miniature circuit breaker is suitable for DC circuits with a rated operating voltage of DC500V (1P), DC1000V (2P), DC1500V (3P) and below, and a rated operating current of 63A and below, providing functions of connection, breaking, and isolation, with overload and short-circuit protection.

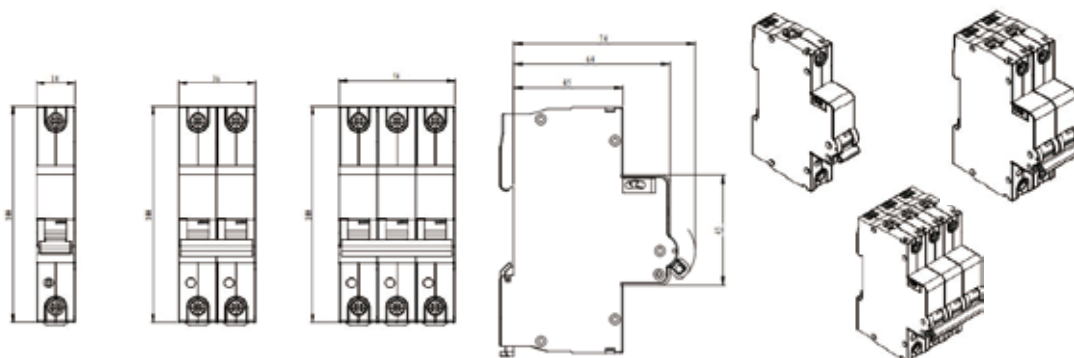
Compliance with Standards

GB/T14048.2, IEC 60947-2

Performance Parameters

S/N	Item	Unit	Parameter Value
1	Rated operating voltage U_e	V	500/1000/1500
2	Rated insulation voltage U_i	V	500/1000/1500
3	Rated impulse withstand voltage U_{imp}	kv	6
4	Rated operating current I_e	A	63
5	Rated ultimate short-circuit breaking current I_{cu}	kA	6
6	Rated operating short-circuit breaking current I_{cs}	kA	6
7	Tripping curve		B/C
8	Altitude conditions	m	≤2000
9	Mechanical durability	Cycles	20000
10	Electrical durability	Cycles	1500
11	Ingress protection rating		IP20
12	Mounting method		Mounted with guide rail
13	Single-pole width		18mm

Dimensions





SYHK Series Combiner Cabinet

Combiner cabinets are essential accessories in energy storage power stations, mainly used for current combination and distribution. They can combine the currents from energy storage battery packs and other power sources before outputting them to the grid.

Function Description

Supports up to 22 clusters of busbars (Calculated at 280Ah, 0.5P)	System current parameters: Cell stack current $\leq 4000A$	Supports digital output, capable of controlling distribution breaking, closing and opening of return switch, etc.
System voltage parameters: Cell stack voltage $\leq DC1500V$ (customizable to DC2000V)	Supports power supply for Energy Storage Management Unit (ESMU)	Supports RS-485, CAN.ModbusTCP and RS-232 communication modes

Performance Parameters

Item	Parameter
Rated voltage of DC busbar circuit	DC1500V
Rated current of DC busbar circuit	800A~4000A
Rated insulation gap	$\geq 25mm$
Rated voltage of AC distribution circuit	400VAC
Rated current of AC distribution circuit	70A
IP rating of enclosure	IP30
Lock for cabinet door	Top and bottom key-operated lock, with padlock hole
Cabinet dimensions (W*D*H: mm*mm*mm)	600*800*2300

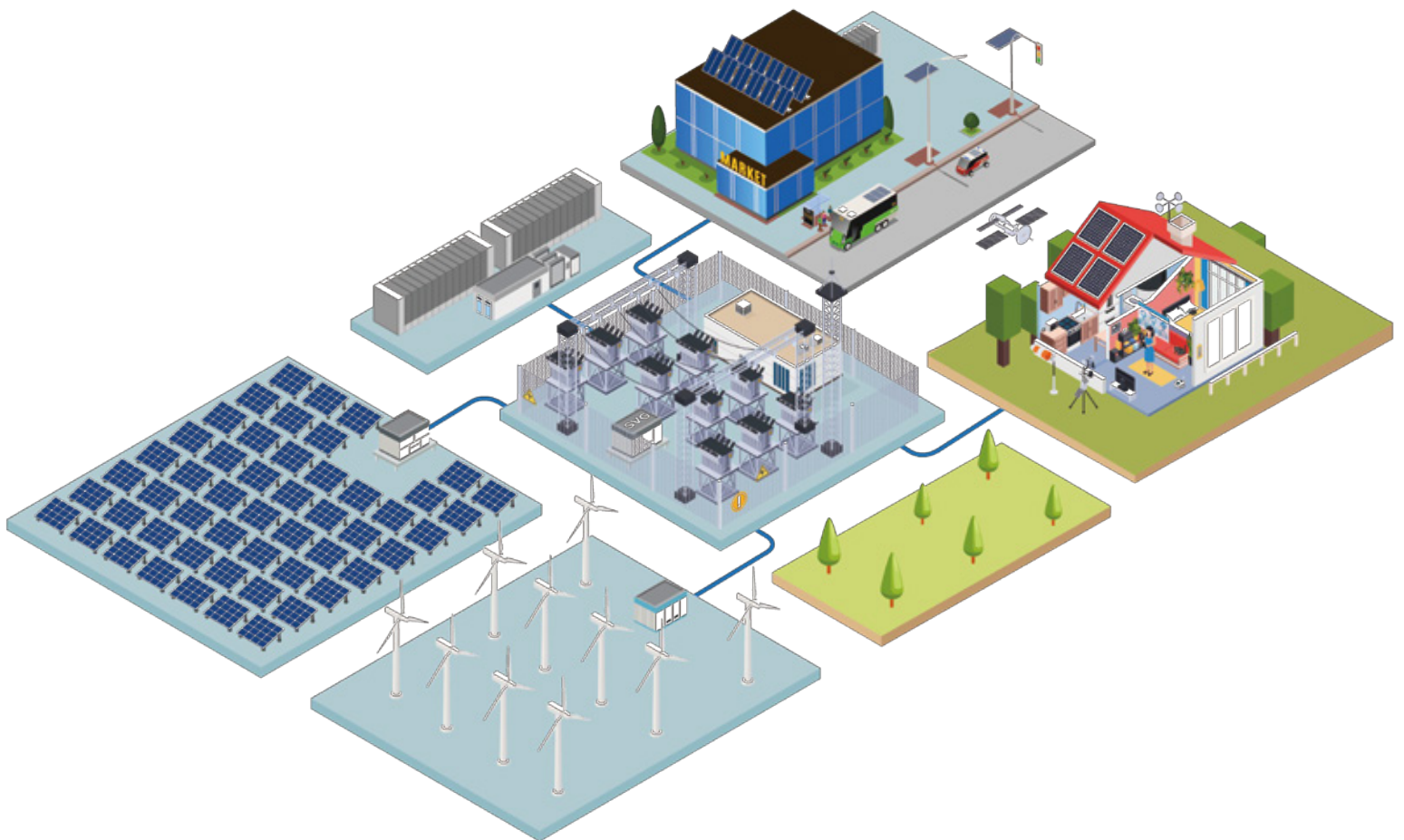
PV Solutions

Centralized PV

- DC Frame Type Switch-disconnectors
- DC Molded Case Circuit Breaker
- DC Molded Case Switch-disconnectors
- DC Rotary Switch-disconnectors

String PV

- DC Rotary Switch-disconnectors





DC Frame Type Switch-disconnectors SYW6GZ-1600

This SYW6GZ Series DC Frame Type Switch-disconnectors is suitable for DC systems with a rated operating voltage of DC1500V and below and a rated operating current of 1600A and below, with functions including main circuit connection, breaking, and isolation. Typical application scenarios include energy storage, photovoltaics, and DC distribution.

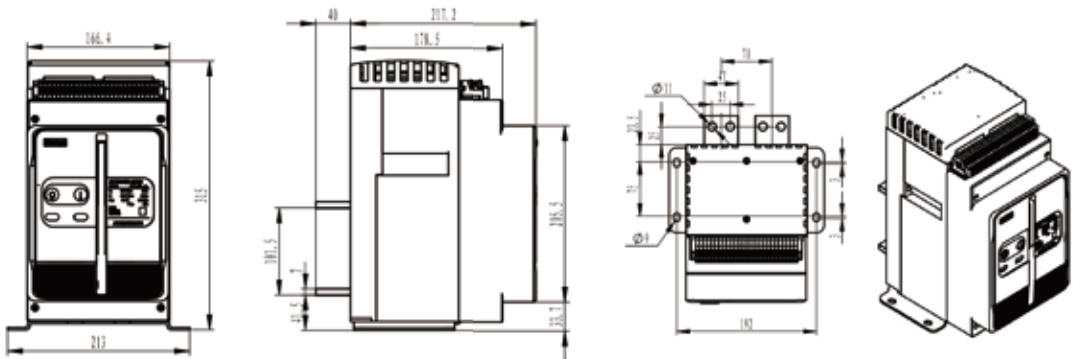
Compliance with Standards

GB/T14048.3, IEC 60947-3、UL489B

Performance Parameters

S/N	Item	Unit	Parameter Value
1	Rated operating voltage Ue	V	1500
2	Rated insulation voltage Ui	V	1500
3	Rated impulse withstand voltage Uimp	kV	12
4	Rated operating current Ie	A	1600
5	Rated short-time withstand current Icw	kA/1s	50
		kA/0.1s	120
6	Utilization category		DC-PV2、UL489B
7	Operating ambient temperature	°C	-40~+70
8	Altitude conditions	m	5000
9	Mechanical durability	Cycles	15000
10	Electrical durability	Cycles	1000
11	Ingress protection rating		IP20
12	Pollution degree rating		Degree 3

Dimensions



This SYW6GZ Series DC Frame Type Switch-disconnectors is suitable for DC systems with a rated operating voltage of DC1500V and below and a rated operating current of 2500A and below, providing functions of main circuit connection, breaking, and isolation. Typical application scenarios include energy storage, photovoltaics, and DC distribution.

GB/T14048.3, IEC 60947-3

S/N	Item	Unit	Parameter Value
1	Rated operating voltage Ue	V	1500
2	Rated insulation voltage Ui	V	1500
3	Rated impulse withstand voltage Uimp	kV	12
4	Rated operating current Ie	A	2500
5	Rated short-time withstand current Icw	kA/1s	100
		kA/0.2s	150
6	Utilization category		DC-PV2
7	Operating ambient temperature	°C	-40~+70
8	Altitude conditions	m	5000
9	Mechanical durability	Cycles	15000
10	Electrical durability	Cycles	1000
11	Ingress protection rating		IP20
12	Pollution degree rating		Degree 3

[illegible]



DC Frame Type Switch-disconnectors SYW6GZ-4000

This SYW6GZ Series DC Frame Type Switch-disconnectors is suitable for DC systems with a rated operating voltage of DC1500V and below, and a rated operating current of 4000A and below, providing functions of main circuit connection, breaking, and isolation. Typical application scenarios include energy storage, photovoltaics, and DC distribution.

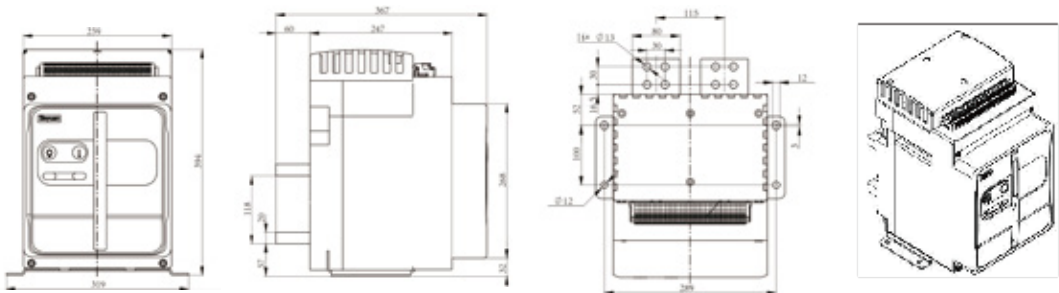
Compliance with Standards

GB/T14048.3, IEC 60947-3、UL489B

Performance Parameters

S/N	Item	Unit	Parameter Value
1	Rated operating voltage Ue	V	1500
2	Rated insulation voltage Ui	V	1500
3	Rated impulse withstand voltage Uimp	kV	12
4	Rated operating current Ie	A	4000
5	Rated short-time withstand current Icw	kA/1s	100
		kA/0.2s	150
6	Utilization category		DC-21B、UL489B
7	Operating ambient temperature	°C	-40~+70
8	Altitude conditions	m	5000
9	Mechanical durability	Cycles	15000
10	Electrical durability	Cycles	1000
11	Ingress protection rating		IP20
12	Pollution degree rating		Degree 3

Dimensions





DC Molded Case Circuit Breaker SYM6Z-250

This SYM6Z Series Molded Case DC Circuit Breaker is suitable for DC systems with a rated operating voltage of DC1500V or below and a rated operating current of 250A or below, providing functions of overload and short-circuit protection. Typical application scenarios include electrochemical energy storage, large-scale photovoltaics, DC data centers, and DC distribution.

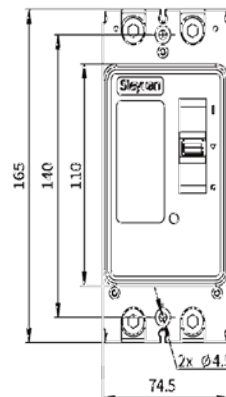
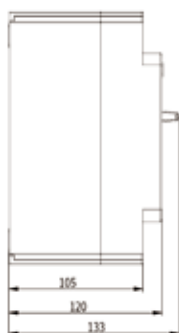
Compliance with Standards

GB/T14048.2, IEC 60947-2

Performance Parameters

S/N	Item	Unit	Parameter Value
1	Rated operating voltage U_e	V	1500
2	Rated insulation voltage U_i	V	1600
3	Rated impulse withstand voltage U_{imp}	kV	12
4	Rated operating current I_e	A	250
5	Rated ultimate short-circuit breaking current I_{cu}	kA	6
6	Rated operating short-circuit breaking current I_{cs}	kA	6
7	Utilization category		A
8	Operating ambient temperature	°C	-40~+70
9	Altitude conditions	m	≤5000
10	Mechanical durability	Cycles	10000
11	Electrical durability	Cycles	1000
12	Ingress protection rating		IP20

Dimensions





DC Molded Case Switch-disconnectors SYM6GZ-250

This SYM6GZ series DC molded case switch is suitable for DC systems with a rated operating voltage of DC1500V and below and a rated operating current of 250A and below, providing functions of main circuit connection, breaking, and isolation. Typical application scenarios include electrochemical energy storage, large-scale photovoltaics, DC data centers, and DC distribution.

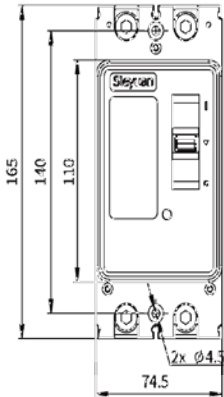
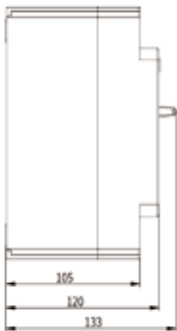
Compliance with Standards

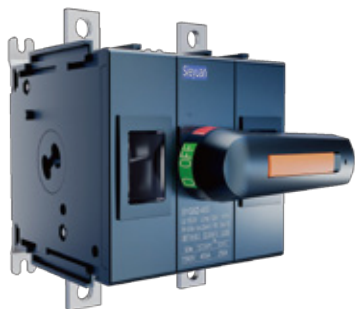
GB/T14048.3, IEC 60947-3

Performance Parameters

S/N	Item	Unit	Parameter Value
1	Rated operating voltage Ue	V	1500
2	Rated insulation voltage Ui	V	1600
3	Rated impulse withstand voltage Uimp	kV	12
4	Rated operating current Ie	A	250
5	Rated limiting short-circuit current Iq	kA	30
6	Utilization category		DC-PV2
7	Operating ambient temperature	°C	-40~+70
8	Altitude conditions	m	≤5000
9	Mechanical durability	Cycles	10000
10	Electrical durability	Cycles	1000
11	Ingress protection rating		IP20

Dimensions





DC Rotary Switch-disconnectors SYG6Z-400

This SYG6Z-400 Series DC Rotary Switch-disconnectors is suitable for DC systems with a rated operating voltage of DC1500V or below and a rated operating current of 400A or below, providing functions of overload and short-circuit protection. Typical application scenarios include electrochemical energy storage, large-scale photovoltaics, DC data centers, and DC distribution.

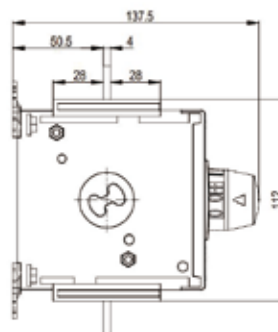
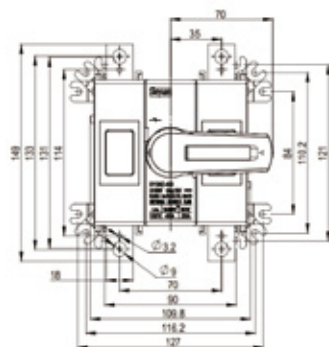
Compliance with Standards

GB/T14048.3, IEC 60947-3

Performance Parameters

S/N	Item	Unit	Parameter Value
1	Rated operating voltage U_e	V	1500
2	Rated insulation voltage U_i	V	1500
3	Rated impulse withstand voltage U_{imp}	kV	12
4	Rated operating current I_e	A	400
5	Rated short-time withstand current I_{cw}	kA/1s	8
		kA/0.15s	20
6	Rated limiting short-circuit current I_q	kA	30
7	Rated short-circuit making capacity I_{cm}	kA	10
8	Utilization category		DC-PV2
9	Operating ambient temperature	°C	-30~+75
10	Altitude conditions	m	5000
11	Mechanical durability	Cycles	8000
12	Electrical durability	Cycles	400
13	Ingress protection rating		IP20

Dimensions





DC Rotary Switch-disconnectors SYG6Z-63

This SYG6Z Series DC Rotary Switch-disconnectors is suitable for DC systems with a rated operating voltage of DC1500V and below and a rated operating current of 63A and below, providing functions of main circuit connection, breaking, and isolation. Typical application scenarios include energy storage and photovoltaics.

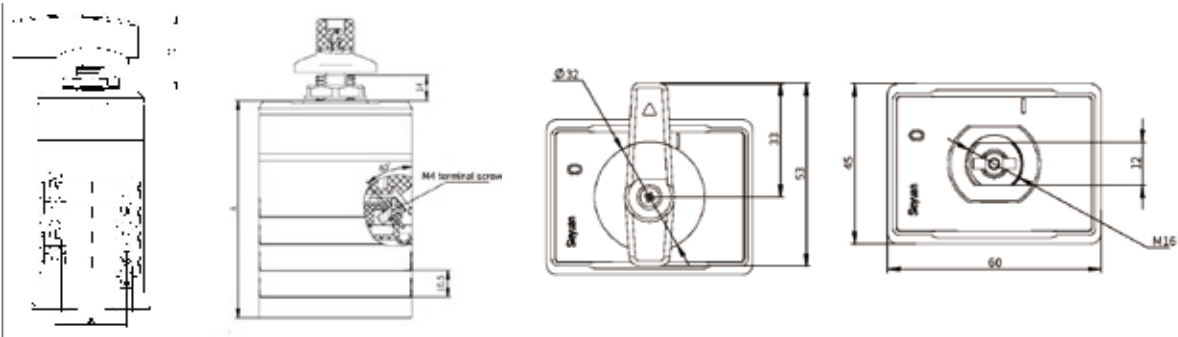
Compliance with Standards

GB/T14048.3, IEC 60947-3、AS60947.3

Performance Parameters

S/N	Item	Unit	Parameter Value
1	Rated operating voltage Ue	V	1500
2	Rated insulation voltage Ui	V	1500
3	Rated impulse withstand voltage Uimp	kV	8
4	Rated operating current Ie	A	20, 25, 40
5	Conventional free-air thermal current Ith	A	63
6	Utilization category		DC-PV2
7	Operating ambient temperature	°C	-40~+85
8	Altitude conditions	m	5000
9	Mechanical durability	Cycles	15000
10	Electrical durability	Cycles	300
11	Ingress protection rating of port		IP20
	Ingress protection rating of panel mounting hole position		IP66
12	Pollution degree rating		Degree 3
13	Number of plies		2、3、4、6、8

Dimensions





DC Rotary Switch-disconnectors SYG6ZM-63

This SYG6ZM Series DC Rotary Switch-disconnectors is suitable for DC systems with a rated operating voltage of DC1500V and below and a rated operating current of 63A and below, providing functions of main circuit connection, breaking (automatic), and isolation. Typical application scenarios include energy storage and photovoltaics.

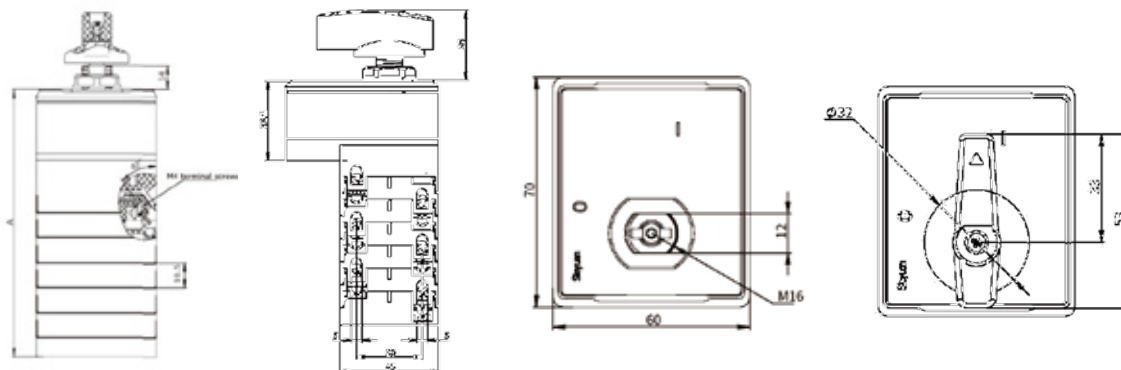
Compliance with Standards

GB/T14048.3, IEC 60947-3、AS60947.3

Performance Parameters

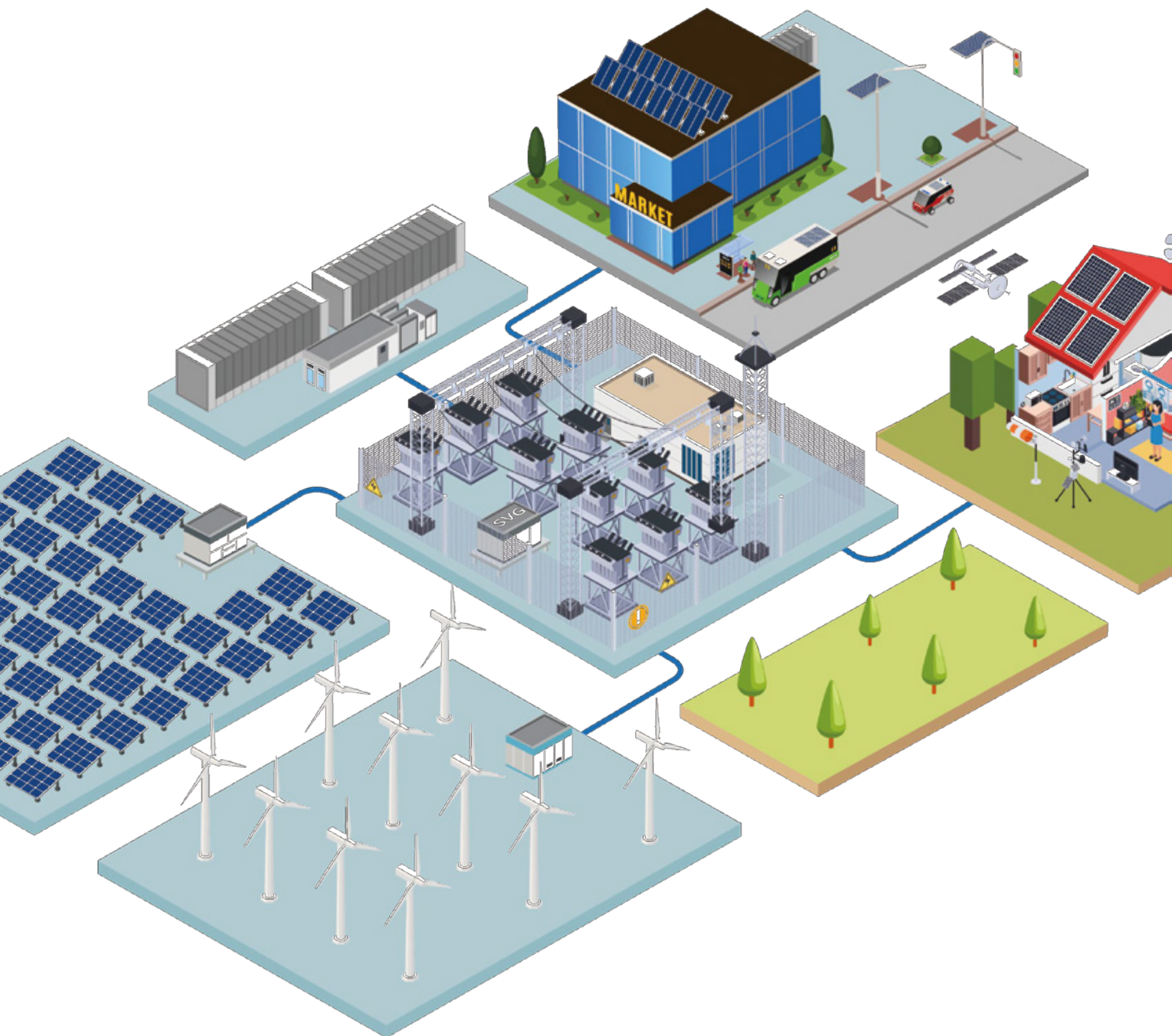
S/N	Item	Unit	Parameter Value
1	Rated operating voltage U_e	V	1500
2	Rated insulation voltage U_i	V	1500
3	Rated impulse withstand voltage U_{imp}	kV	8
4	Rated operating current I_e	A	20, 25, 40
5	Conventional free-air thermal current I_{th}	A	63
6	Utilization category		DC-PV2
7	Operating ambient temperature	°C	-40~+85
8	Altitude conditions	m	5000
9	Mechanical durability	Cycles	10000
10	Electrical durability	Cycles	300
11	Ingress protection rating of port		IP20
	Ingress protection rating of panel mounting hole position		IP66
12	Pollution degree rating		Degree 3
13	Number of plies		4、6、8、10、12

Dimensions



SVG/High Voltage Inverter Solutions

- AC Bypass Switch





AC Bypass Switch

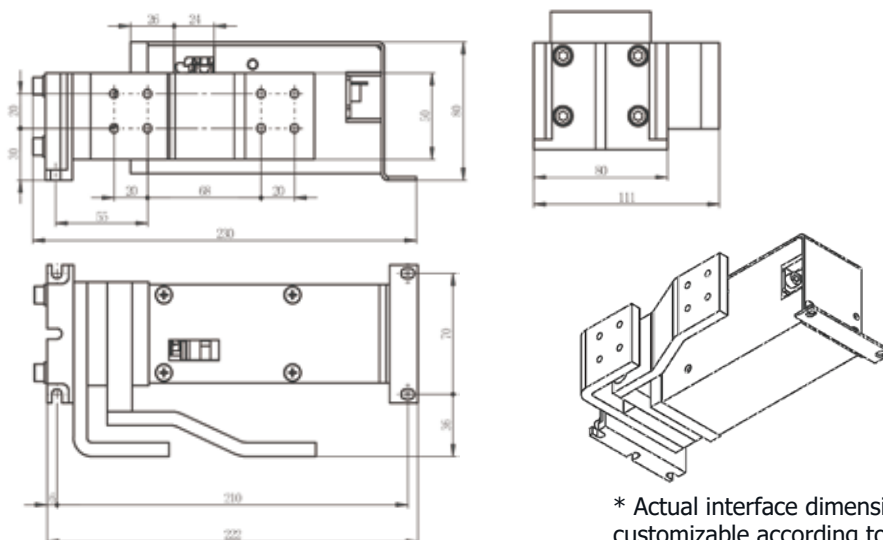
QBS Series

This QBS Series Bypass Switch is suitable for the submodule of the SVG/High Voltage Inverter power unit, with a redundant design. when an IGBT in a sub-module fails, the bypass switch can be quickly activated to bypass the fault, ensuring the normal operation of the product.

Performance Parameters

S/N	Item	Unit	Parameter Value
1	Rated operating voltage Ue	V	1700
2	1min power frequency withstand voltage Ud	kV	4
3	Rated operating current Ie	A	520、908、1250
4	Operating ambient temperature	℃	-5~+50
5	Altitude conditions	m	≤2000
6	Mechanical durability	Cycles	1000
7	Storage temperature	℃	-40~+70
8	Transportation temperature	℃	-40~+70
9	Atmospheric pressure	kPa	70~106
10	Closing time (including bounce)	ms	≤10
11	Feedback time of closing state (including bounce)	ms	≤10
12	Seismic intensity	Magnitude	≤8

Dimensions



* Actual interface dimensions are customizable according to customer requirements.



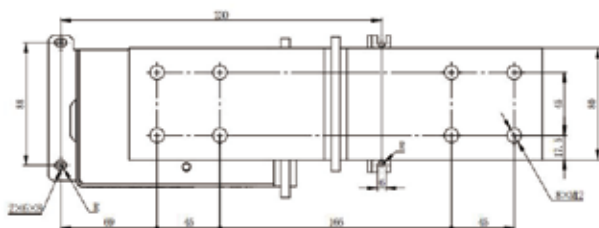
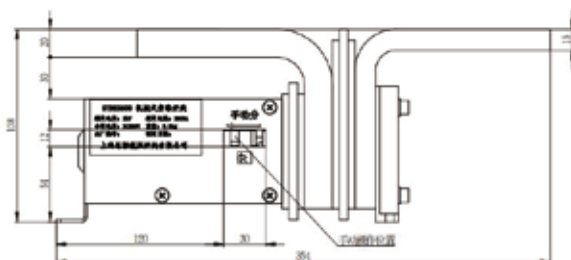
AC Bypass Switch QBS Series

This QBS Series Bypass Switch is suitable for the submodule of the SVG/High Voltage Inverter power unit, with a redundant design. when an IGBT in a sub-module fails, the bypass switch can be quickly activated to bypass the fault, ensuring the normal operation of the product.

Performance Parameters

S/N	Item	Unit	Parameter Value
1	Rated operating voltage Ue	V	2000
2	1min power frequency withstand voltage Ud	kV	6
3	Rated operating current Ie	A	2500
4	Operating ambient temperature	°C	-5~+50
5	Altitude conditions	m	≤2000
6	Mechanical durability	Cycles	1000
7	Storage temperature	°C	-40~+70
8	Transportation temperature	°C	-40~+70
9	Atmospheric pressure	kPa	70~106
10	Closing time (including bounce)	ms	≤10
11	Feedback time of closing state (including bounce)	ms	≤10
12	Seismic intensity	Magnitude	≤8

Dimensions



* Actual interface dimensions are customizable according to customer requirements.

Sieyuan

**Sieyuan Low
Voltage**

The New Force in Low Voltage Electrical Appliances for the New Era

**Pioneering an Intelligent, Green, Safe,
and Low-Voltage New World**

Sieyuan

**Shanghai Sieyuan Low
Voltage Switchgear Co., Ltd.**

Address: No. 3399, Huaning Road,
Minhang District, Shanghai City, China
Tel.: 021-61610977
Fax: 021-61610900

Sales Hotline: 021-61610977
Postal Code: 201108
Website: www.sieyuan.com

